

Course Description

L1 Precision Felling, Chainsaw Handling , Safety and Ergonomics

2 Day Module

The participants will be educated in modern felling techniques; and learn a systematic method to plan the operation and skillfully work the plan. Practices based on leverage, mechanical advantage, and ergonomics, as they relate to precision felling and chain saw handling, will be taught, demonstrated, and experienced. Students will be trained in practical exercises to develop skills and measure results. This course will teach how planning, skill development, and preventative maintenance equal increased safety and productivity.

Course Outline

- Safety and Risk Management
- Chain Saw Operation
- Chainsaw Cutting
- Felling Procedures
- Specialized Felling Procedures
- Chain Saw Maintenance

L1 Tree Climbing Methods & Best Practice

2 Day Module

The participants will be educated in modern tree climbing systems; and learn about the tools and techniques that make tree climbing safer, easier, and more efficient. Basic concepts of physics and mechanical advantage will be introduced as they relate to climbing systems. This course emphasizes safety, skill and productivity; and consists of both theoretical and practical learning activities.

Course Outline

- Safety and Risk Management
- Seeting Lines and Establishing Tie-in Points
- Climbing Equipment
- Ropes: Care, Construction & Maintenance
- Climbing Knots and Hitches
- Rope Climbing
- Spur Climbing: Methods & Best Practice
- Climbing Techniques and Methods

Contact ArborMaster for full course content

Registration Information

Course Outlines: For course outlines, what to bring and where to stay, visit our website at www.ArborMaster.com or call 860.429.5028.

Registration: Please try to register at **least 30 days** in advance of a class. Classes are expected to fill, however if minimum numbers are not met 30 days prior, the course(s) may be rescheduled or cancelled. Full payment is due at time of registration to confirm your space in the class, however will not be processed or deposited until 30 days prior to the start of the program. Space is limited and is based on first come, first serve basis.

Eligibility: Participants must be at least the age of majority in the state that classes are being held and hold full time employment working in and around trees as an arborist, in a hands-on role supporting arborists, or other related role in which you use arborist equipment on a regular basis. Courses not offered to individuals who do not work in an arborist or supporting arborist capacity nor private homeowners or for recreational tree climbing purposes.

Release: Upon receipt of your registration, a participant release form will be sent to you. Cancellation rules apply, and refusal to sign a release form on Day 1 may result in your forfeiting all or part of your registration fee, unless the course(s) are cancelled at least 30 days in advance.

Cancel Policy: Up to 30 days: Full refund; 29-14 days: 50% cancel penalty; 13-0 days: 100% cancel penalty; No-shows: No refund.

ISA Continuing Education Units

ISA Certified Arborists and CTSP's will receive 16 CEU's for each 2-day module

Arborist Equipment Discounts

Upon completion of one module, students will receive a one time 10% discount from SherrillTree for purchase of arborist equipment. Upon completion of the L1 Tree Climbing Methods and L1 Precision Felling students receive a 15% discount from Husqvarna for a chainsaw and/or PPE at participating dealers.

Workbooks, Certificates and a Tee

Each student will receive a course workbook for each module; a Certificate of Participation upon completion; and an ArborMaster tee.

Yes! I'd like to sign up for ArborMaster courses in Virginia!

Four easy ways to register:

Mail: P.O. Box 62, Willington, CT 06279

Fax: 860.429.5028

Online: www.ArborMaster.com

Phone: 860.429.5028

Name	Company		
Address	City	State	Zip
Home telephone	Mobile		
Email	Age	Shirt Size	(M) (L) (XL) (XXL)

Select Your Virginia Course(s) Below

L1PF: Level 1 Precision Felling & Chainsaw Handling: November 16-17

L1C: Level 1 Tree Climbing Methods & Best Practice: November 18-19

Course rates - the more classes you take in one visit, the more you save!

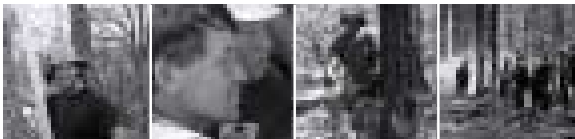
1 2-Day class: \$499 **2** 2-Day classes \$939 (save \$59)

Form of Payment: Check or credit card

Visa/MC#	Exp
Name on Card	
Amount authorized \$	
Check amount enclosed \$	

I have read this document & agree to abide by it's terms.

Signed	Date
--------	------



Attendee Testimonials

"Look into taking some ArborMaster courses..... the BEST money you can spend for learning"

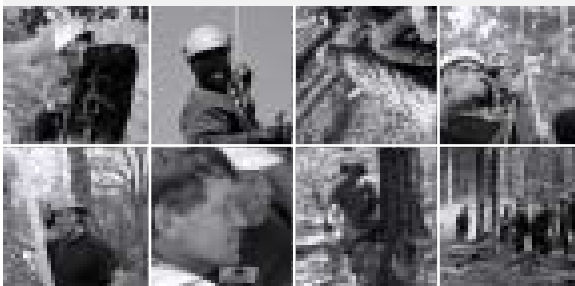
"The Surf City tree crew wanted to thank you for the best in-depth training opportunity they have ever had. The materials that were covered and the hands on personal instruction were outstanding, there is no way these techniques could be solely learned in a class room or seminar setting"

"Your approach is great and you keep it all interesting. We are using what we learned every day and whenever I help one of the crews that does not yet have a lowering device or a pulley or even a sling, I wonder how we ever managed to make a dollar in the past."

"Me, the guy that knows it all, been there, done that - humbled by how much I learned"

"I am finally taking the time to send a sincere thank you to your organization. I have to admit I was more than a bit skeptical about bringing in "professionals" to train my employees, especially the ones with years of experience. As it turns out they were the ones that got the most out of the training"

"I think the material was presented at the right pace. I am inexperienced and appreciate the instructor's professionalism and patience. Thanks"



ArborMaster Coming to Reston, VA this fall!

ArborMaster training programs are delivered both through private in-house programs and on an open enrollment basis at select regional locations. The open enrollment format was created to meet the specific needs of the smaller organization, with typically fewer than 5-6 crew members.

November 2010

L1 Precision Felling & Chainsaw Handling
November 16-17, 2010

L1 Tree Climbing Methods & Best Practice
November 18-19, 2010

Contact the ArborMaster office for further information or visit www.ArborMaster.com

Who should attend?

ArborMaster training courses are geared to municipal/government, commercial, residential and utility arborists. The training modules are designed to provide a graduated, systematic approach, building on skills and knowledge. These courses will inspire professionalism, pride and enthusiasm from the members of your team.

Coming to
Reston, Virginia
in November!

ArborMaster. See You At The Top!
Where Excellence and Sustained Performance are Achieved
P.O. Box 62
Willington, CT 06279

ArborMaster Alliance Partners

Husqvarna • Buckingham • Samson • SherrillTree • Vermeer • Silky • Oregon



2010: Reston, Virginia

Safety, Skill & Productivity Training
for people and organizations who work with, in and around trees.

ArborMaster® Training Programs
Standard, Custom and Precision hands-on skills training in a wide range of tree care related topics.*

ArborMaster® Beyond Training®
Products & services designed to support our core educational programs by assisting learners and management in the transfer of training to performance.

ArborMaster® Seminars and Speaker Series
Offering a wide range of topics and formats for large or small groups.

*ArborMaster training programs delivered through in-house and regional open enrollment programs. For a complete listing of our courses and services, visit www.ArborMaster.com

ArborMaster Alliance Partners

Husqvarna • Buckingham • Samson
SherrillTree • Vermeer • Silky • Oregon

ArborMaster is proud to be partnered with each of these companies and appreciates their support of our programs and customers. We invite you to visit the Alliance Partner section of our website to learn more.